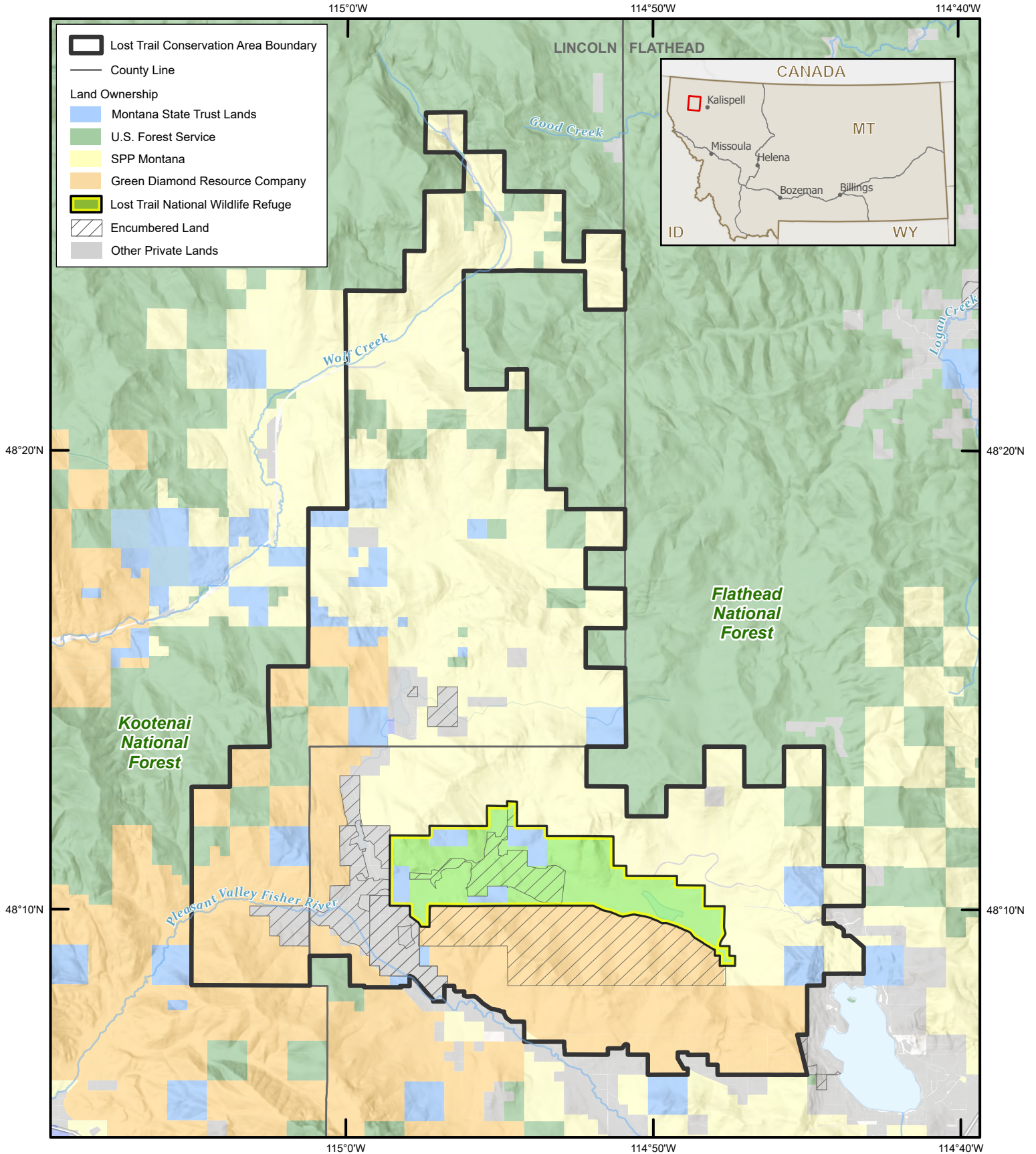




U.S. Fish & Wildlife Service

# Lost Trail Conservation Area: Land Ownership

Flathead & Lincoln Counties, Montana



PRODUCED IN THE DIVISION OF REALTY  
 LAKEWOOD, COLORADO  
 LAND STATUS CURRENT TO: 12/9/2020  
 MAP DATE: 2/1/2021  
 BASEMAP: DRG  
 MONTANA MERIDIAN

